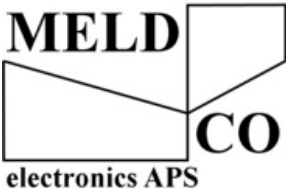
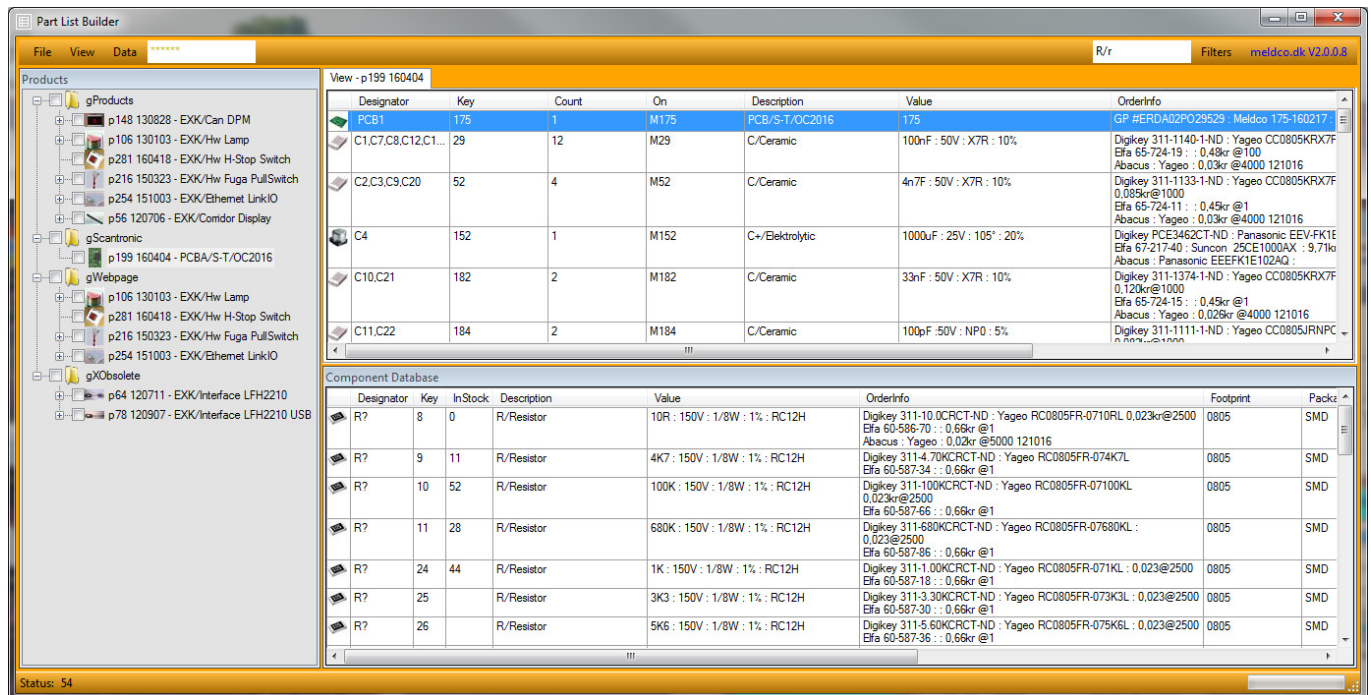


Title:	User Manual Part List Builder Software	
Author:	ELD	
File:	287-170503.doc	
First Version:	2017-05-03	
Updated:	2017-12-06	



Product Description:

Program for maintenance of Part Lists.

The program is based on Microsoft Access database.

In this version, is added a menu View where you can setup many different views.

The OrderInfo field is changed to multiline so there can be many Suppliers for each component.

The program is optimized for speed so the tree is saved in a xml file so the program starts faster.

In addition there is added Groups, this makes the tree easier to read,

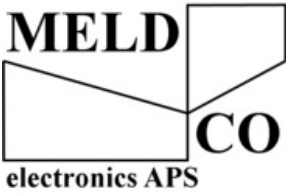
a Group is the same as a Part List the only difference is it do not have a number and version so its easier to create and delete.

The user interface is been divided into separate windows, so in a later version we can add possibility for open more part lists at the same time.

Table of Contents

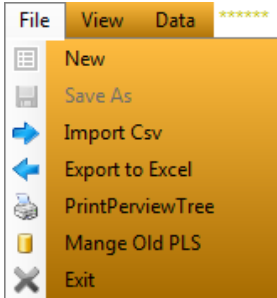
1. User Interface Main Menu
2. User Interface Windows
3. Database Structure (data.mdb)
4. File Structure

To make change in the database you must be super user, type a super user pin code in the pin code field. There is only one in the company there must have this function, because it can give problems if many makes changes at the same time, as default the program is setup to type the pin code if the field is clicked.

Title:	User Manual Part List Builder Software	
Author:	ELD	
File:	287-170503.doc	
First Version:	2017-05-03	
Updated:	2017-12-06	

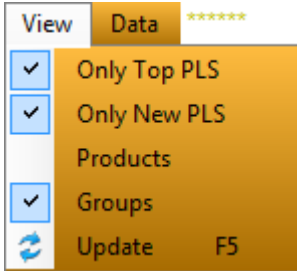
1 User Interface Main Menu

File



- 1.1 New
Clears the Part List window.
- 1.2 Import CSV
This function imports a CSV file (comma separated file), from a extern program like Altium.
- 1.3 Save As
Save a Part List or Group.
- 1.4 Export to Excel
Export Part List or Group to excel, this function is used to send a Part List to a sub supplier.
- 1.5 Mange Old PLS
Move old Part List to oldpls.mdb To make the program faster.

View

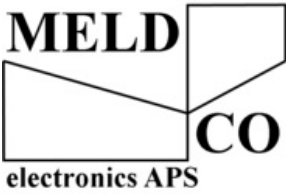


- 1.6 Only Top PLS
If this is off, will all the Part Lists be shown as a list, instead of a tree.
- 1.7 Only New PLS
If this is off, will all versions of a Part List be shown, if it's on only the newest version is shown.
- 1.8 Products
If this is on all products is shown, else only the products in groups will de shown.
- 1.9 Groups
Show Groups.
- 1.10 Refresh
Update Tree, must be run after Part List or Group Save and Delete,
Looks Data[key] directory trough for index.jpg image and convert it to "~20x20px.jpg", "~50x50px.jpg", "~80x80px.jpg"

Data

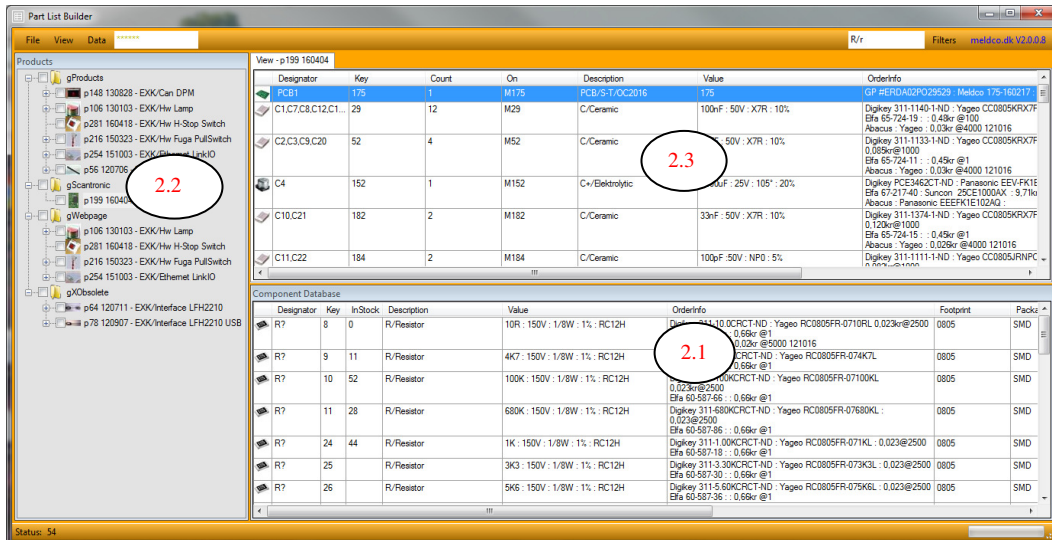


- 1.11 Data
Shortcut to all \Data[key]
- 1.12 Output
Shortcut to \Output folder where all Part Lists and Gerber data there is send to a supplier can be saved.
Remember to write a little in "_version.txt" every time something is send.
- 1.13 ExportWebDate
Copt all Webdata to the homepage path..

Title:	User Manual Part List Builder Software	
Author:	ELD	
File:	287-170503.doc	
First Version:	2017-05-03	
Updated:	2017-12-06	

2 User Interface Windows

Is divided in to 3 windows.

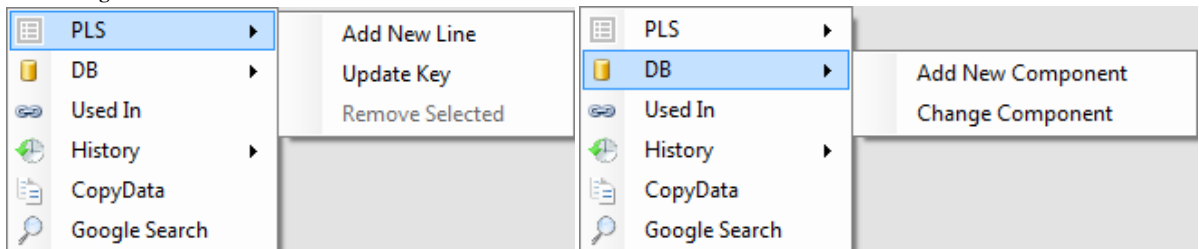


2.1 Component Database.

Before a component can be used in a part list or group it must have a number(KEY), to get this the components must be Created in the component database, they will automatic get a number(KEY). To make a new part list this also first must be created in the database so it also have a unique key so it can be related to, the name of the part list is the Description. When it is created in the database, a Part List can be saved on the key by File, Save As. An component can not be deleted only changed. ex. "NU " in front of Description and Value.

All changes will be saved in a log database table xComponentsChanges

2.1.1 Menu if right click line in window 2.1



2.1.2 PLS, Add New Line

Add this component to part list

2.1.3 PLS, Update key

Change selected component in part list to this key (component)

2.1.4 DB, Add New Component

Add a new component to the database, using selected component as template, by popup window.

2.1.5 DB, Change Component

Change component in database, by popup window.

2.1.6 Used In

Shows which part list this component is used in, in popup window.

2.1.7 Show Key History

Shows the changes on this component over time, in popup window.

2.1.8 CopyData

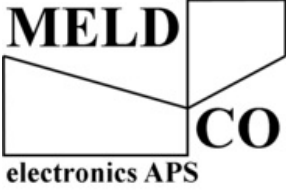
copy data to clipboard.

2.1.9 Google Search

Open a browser search google.com

2.1.10 If a Component is clicked, a explorer will open with images and data

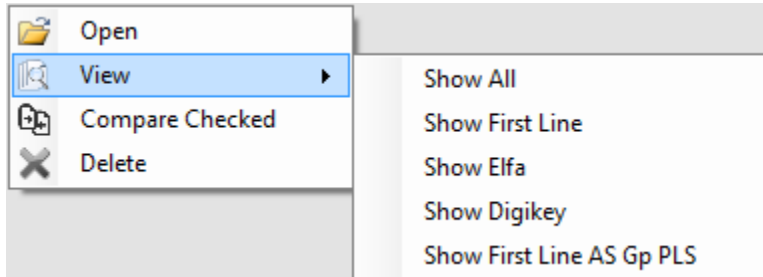
All Components have a folder Data/[key] by click this folder is shown, And its possible to save datasheets and other documentation regarding this component. If a image (index.jpg) is placed here, and menu "View,Refresh" clicked the image will be converted to ~20x20.jpg and shown as the component image.

Title:	User Manual Part List Builder Software	
Author:	ELD	
File:	287-170503.doc	
First Version:	2017-05-03	
Updated:	2017-12-06	

2.2 Part list window 2.2.

When a part list is saved (Save As) after View, Refresh it will be shown in the tree, by menu view it can be selected only to show the newest version or show all.

Menu if you right click on a part list:

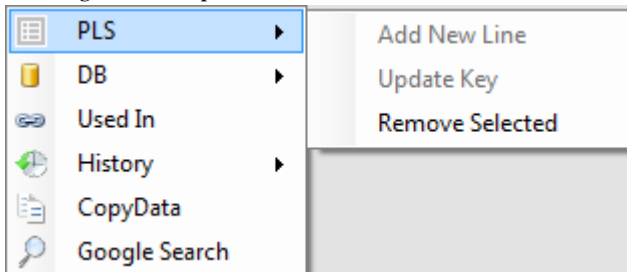


- 2.2.1 Open
Open the selected part list or group in the window (2.3) so it can be changed, one component each line.
- 2.2.2 View
Show the selected part list or group in the window (2.3) in user defined format.
This is set up by clicking View.
- 2.2.3 Compare Checked
This function compares checked part lists in a popup window.
- 2.2.4 Delete
Deletes a part list or group, confirm popup window.

2.3 Window for edit / show part list or group 2.3

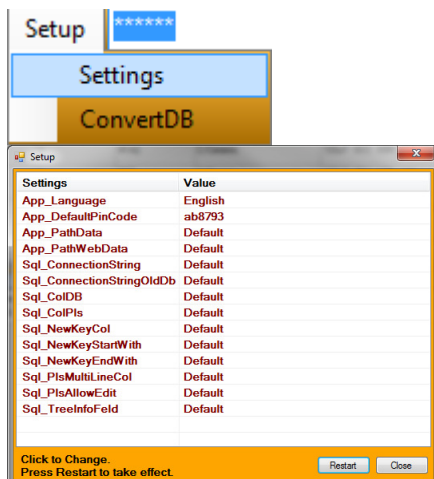
By right click part list or group it can be opened or shown in window (2.3), Then it can be changed and press Save As in file menu it's possible to save it as a group or part list with a new version, The active part list is the one with the newest date. p106_YYMMDD

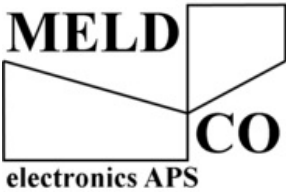
Menu right click component:



- 2.3.1 Remove Selected
Remove selected component from group or part list.

3 Setup pincode (ab4711)



Title:	User Manual Part List Builder Software	
Author:	ELD	
File:	287-170503.doc	
First Version:	2017-05-03	
Updated:	2017-12-06	

4 Database Struktur (data.mdb)

xComponents: table for components.

All tables there starts with p is a part list, them there starts with same number is part list for same product with different version, The number is the key the part list have in the xComponents table.

Grups starts with g they have same format as a part list.

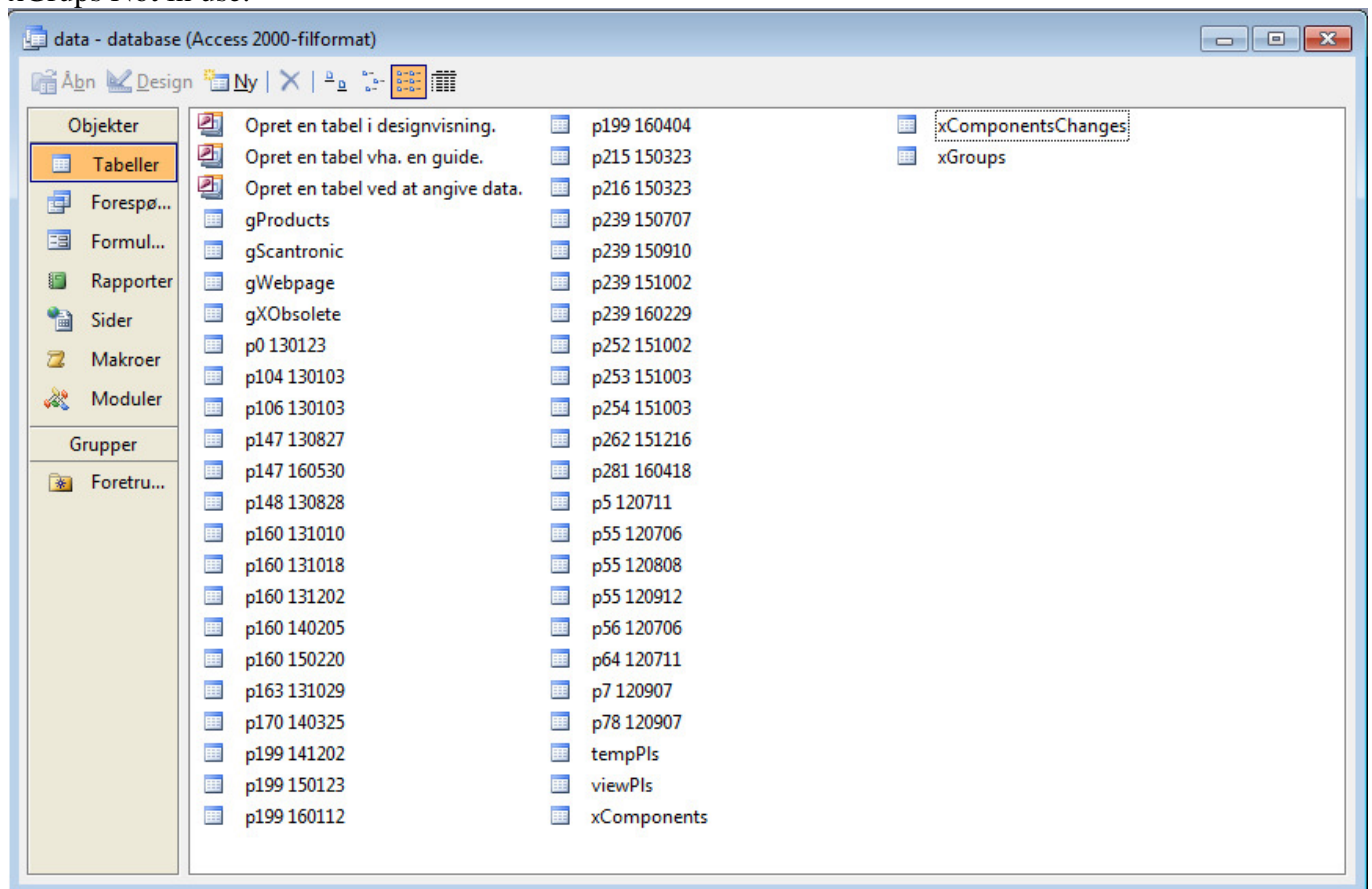
Other:

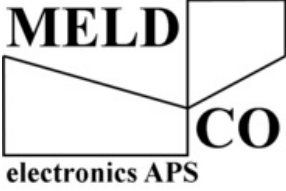
tempPLS: Active open part list shown in view

viewPLS: Part list shown in view

xComponentChanges used to save change history

xGrups Not in use.

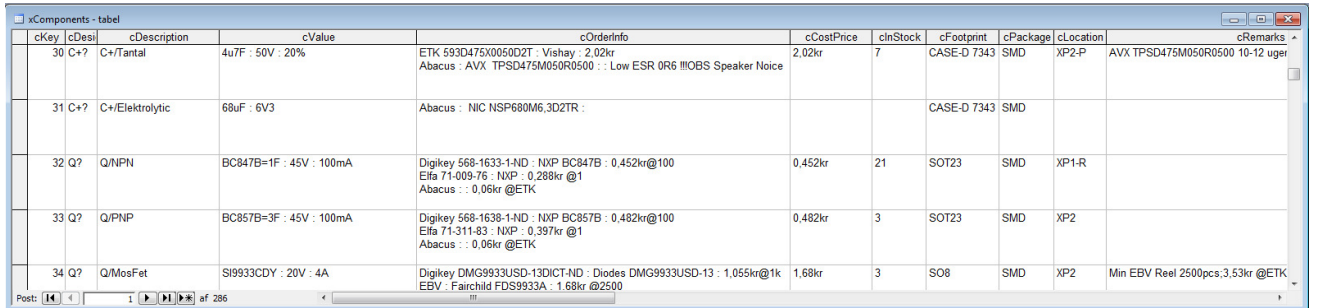


Title:	User Manual Part List Builder Software	
Author:	ELD	
File:	287-170503.doc	
First Version:	2017-05-03	
Updated:	2017-12-06	

4.1 Table xComponents

Is The Table where all parts(components, cardboard box , pcb) is created.

All parts gets a number(KEY) this number is used in all Part List where this component is used, so if a line is changed all Part Lists is changed.



cKey	cDesi	cDescription	cValue	cOrderInfo	cCostPrice	cInStock	cFootprint	cPackage	cLocation	cRemarks
30	C+?	C+/Tantal	4u7F : 50V : 20%	ETK 593D475X0050D2T : Vishay : 2,02kr Abacus : AVX TPSD475M050R0500 : Low ESR 0R6 !!!OBS Speaker Noice	2,02kr	7	CASE-D 7343	SMD	XP2-P	AVX TPSD475M050R0500 10-12 uger
31	C+?	C+/Elektrolytic	68uF : 6V3	Abacus : NIC NSP680M6,3D2TR :			CASE-D 7343	SMD		
32	Q?	Q/NPN	BC847B=1F : 45V : 100mA	Digilkey 568-1633-1-ND : NXP BC847B : 0,452kr@100 Eifa 71-009-76 : NXP : 0,288kr @1 Abacus : 0,06kr @ETK	0,452kr	21	SOT23	SMD	XP1-R	
33	Q?	Q/PNP	BC857B=3F : 45V : 100mA	Digilkey 568-1638-1-ND : NXP BC857B : 0,482kr@100 Eifa 71-311-83 : NXP : 0,397kr @1 Abacus : 0,06kr @ETK	0,482kr	3	SOT23	SMD	XP2	
34	Q?	Q/MosFet	SI9933CDY : 20V : 4A	Digilkey DMG9933USD-13DICT-ND : Diodes DMG9933USD-13 : 1,055kr@1k EBV : Fairchild FDS9933A : 1,68kr @2500	1,68kr	3	SO8	SMD	XP2	Min EBV Reel 2500pcs;3,53kr @ETK

4.2 Part lists

4.2.1 Name

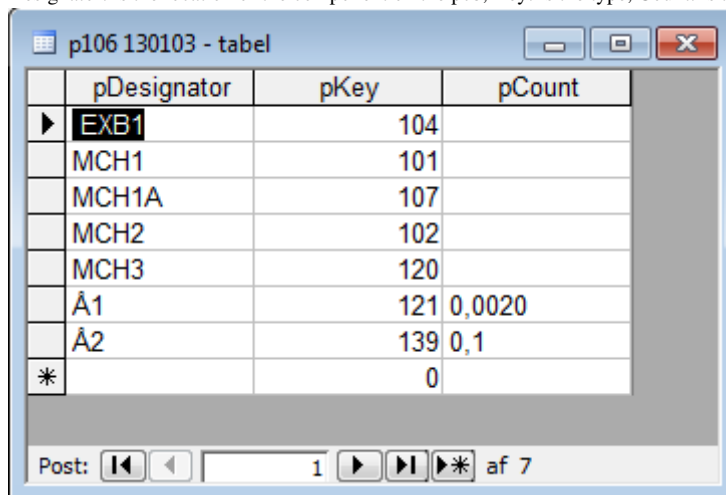
consist of (p [key] space dato)

Key is the number the part list have in xComponent so a part list also can be part of other part lists.

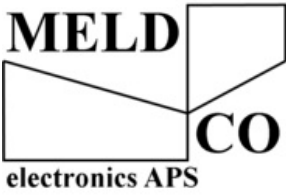
Dato: The version of the part list.

4.2.2 Columns

Designator: is the location of the component on the pcb, Key: is the type, Count: is the pcs (no value =1)



	pDesignator	pKey	pCount
▶	EXB1	104	
	MCH1	101	
	MCH1A	107	
	MCH2	102	
	MCH3	120	
	A1	121	0,0020
	A2	139	0,1
*		0	

Title:	User Manual Part List Builder Software	
Author:	ELD	
File:	287-170503.doc	
First Version:	2017-05-03	
Updated:	2017-12-06	

5 File structur

To Start The program run PartListBuilder.exe

It placed in Release folder

Folder: \Release\Data

Contains images and files for every key in databasen

Folder: \Release\Log

Contains log files for a earlier version of the program

File: \Release\data.mdb is the access database there contains all part list data.

File: \Release\oldpls.mdb is the database for old obsolite part lists, it can be administrated from menu, "Manage Old Pls"

6 Requirements

Windows 7

.net framework 2.0